

INSTALLATION SYSTEMS VICONNECT INSTALLATION SYSTEMS

PRODUCT INFORMATION

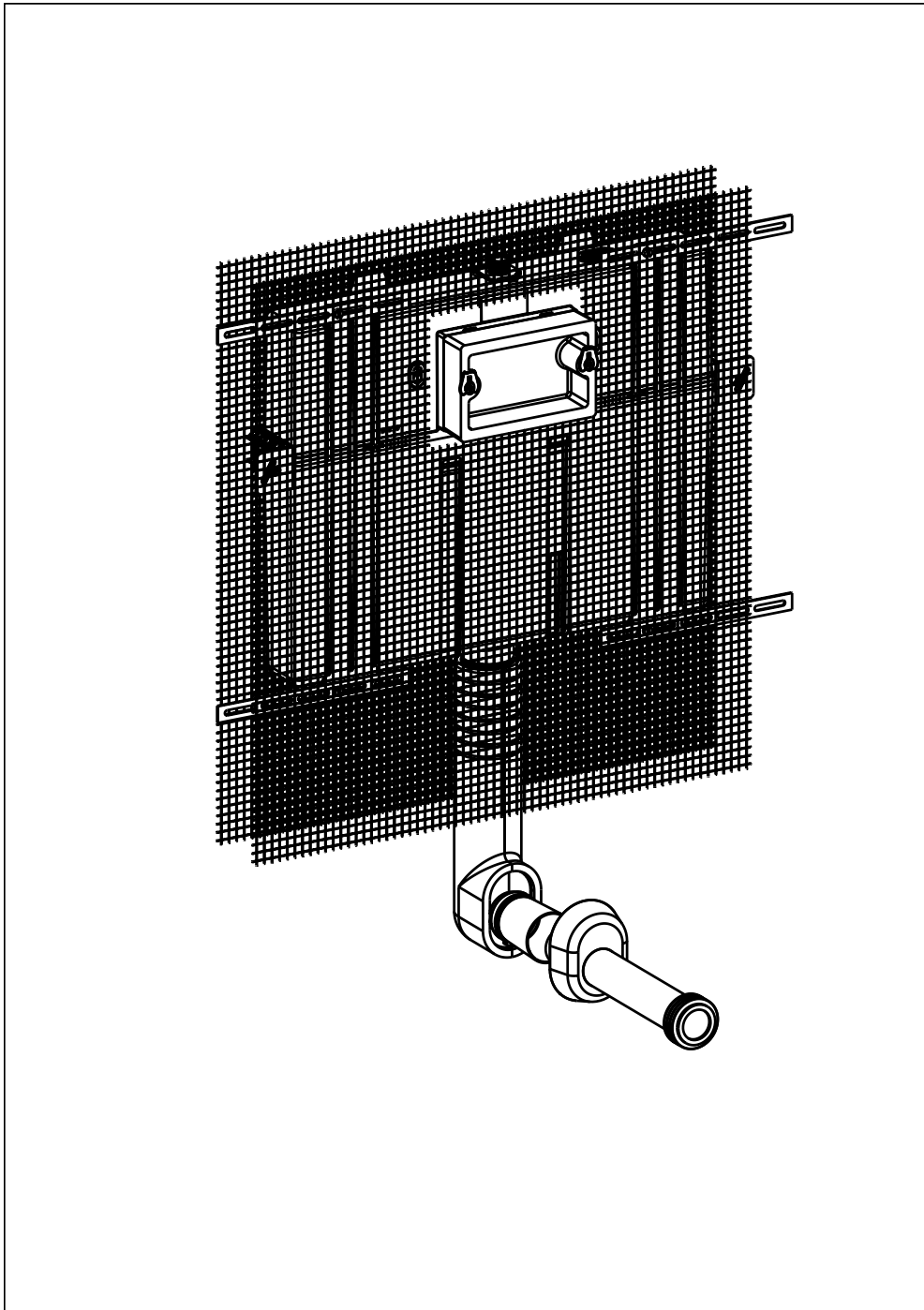
1 . POSITION



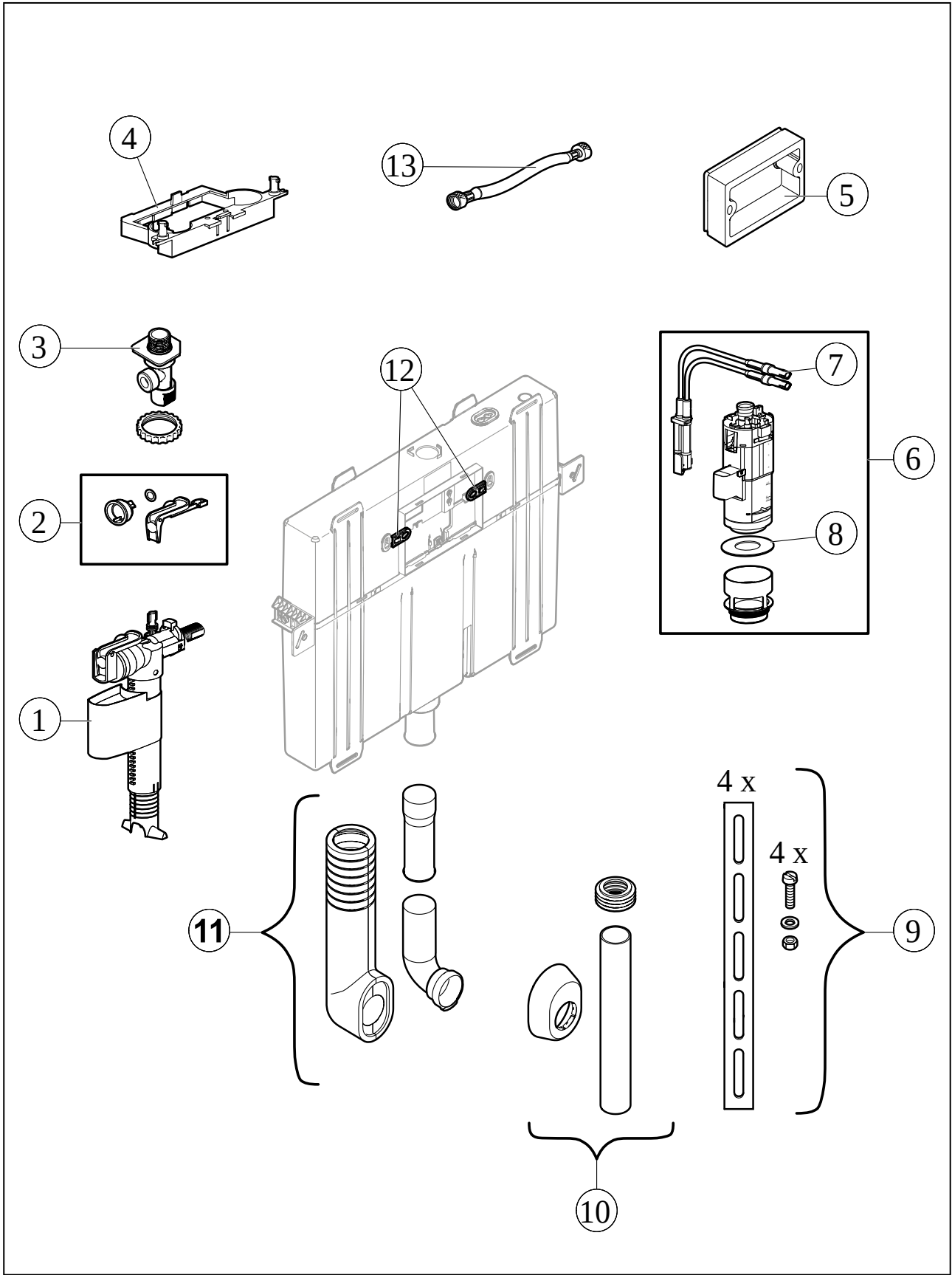
| | |
|--------------------------|---|
| Article number | 92248200 |
| Article title | Villeroy & Boch ViConnect installation systems Concealed cistern Compact, for Brick-wall construction, 648 x 825 x 80 mm |
| Product designation | Concealed cistern Compact |
| Collection | ViConnect installation systems |
| Assembly / Assembly type | Brick-wall construction |
| Assembly instructions | installation on or in front of a solid brick wall |
| Scope of delivery | 1 x cistern , 1 x installation kit |
| Length in mm | 80 |
| Width in mm | 648 |
| Height in mm | 825 |
| Weight in kg | 3,48 |
| Material | Plastic |
| Activation / Flush | front-operated, button function transmitted to drain fitting via flexible cables, connection to flush plate via bayonet joint |
| EAN number | 4051202338282 |

TECHNICAL DRAWINGS

92248200



EXPLOSION DRAWINGS



BILL OF MATERIALS

| No. | Article No. | Description | Quantity |
|-----|-------------|--|----------|
| 1 | 8L073300 | Filling valve | 1 |
| 4 | 92210000 | Positioning device outlet valve for concealed cistern | 1 |
| 12 | 92230800 | Holder for flush plate | 1 |
| 10 | 92249700 | Connection set | 1 |
| 6 | 8L113400 | Outlet valve for concealed cisterns | 1 |
| 8 | 92210700 | Seal for outlet valve | 1 |
| 13 | 92234700 | Connecting hoses | 1 |
| 7 | 92249500 | Cable box for connecting to the outlet valve and flush plate | 1 |
| 2 | 92248900 | Set of washers | 1 |
| 5 | 92210100 | Construction protection for concealed cistern | 1 |
| 3 | 92233800 | Angle valve | 1 |
| 11 | 92210300 | Flush pipe | 1 |
| 9 | 92210400 | Fastening set | 1 |