

pro-step

Profile for trimming stair steps. It substitutes the traditional step ceramic piece by a combination of ceramic tile and profile.

Metallic profiles that cover the non-glazed edge of the tile, protect it from shocks and reduce the risk of slipping.

Recommended use

- Stair steps.
- Residential use.
- Outdoors, use pro-step inox
- Do not use in pools.

Materials

- Anodized aluminium.
- V2A-type stainless steel.
- Natural wood.

Substrates

- All substrates suitable for ceramic tiles laying.
- A suitable substrate for laying ceramics with the thin-bed method must be clean, dry, compact, with a rough texture and flat (deviations inferior to 3 mm every 2 m of surface).

Features

- Rounded edge profile for trimming stairs.
- It features a sledge concealing the cut of the riser.
- Side flange to ease installation.
- Having no ledges, it can be laid in direct contact with the profile. Especially recommended for rectified tiles.
- Easy to cut with every tile layer's everyday tools.

Profile types

pro-step anodized aluminium.

Aluminium profile manufactured by extrusion and anodized chemical treatment.

pro-step PVC 35 feature an anti slip band of 35 mm.

- **Features:**

- Silver
 - Matt
 - Floor tile
 - Indoor / Outdoor.
- The anodization treatment protects aluminium from rust and limits scratches.
 - Protect from any abrasive element which could scratch the exposed profile surface.
 - Anodized aluminium profiles are sensible to the combination of dampness and alkaline products like cement mortars. It is recommended to be extremely careful when installing them. Avoid contact with cement mortars as far as possible and clean any mortar stain which affects the exposed edge of the profile as soon as possible.

pro-step stainless steel

Stainless steel profiles are produced by folding, so their shape is slightly different to that of aluminium or brass profiles. Angles and shapes will always have a rounded finish.

Profiles made of V2A stainless steel are highly resistant both to mechanical stress and chemical attack. Specially recommended outdoors.

- **Features:**

- Matt
 - Floor tile
 - Indoor / Outdoor.
- The profile is supplied with a plastic film protecting it during installation. Once the profile installed, peel off the film with a cutter.
 - Not recommended for use in pools or any other use in direct contact with concentrated chemicals. In any case, we recommend you perform a previous test to check its suitability.

Instructions for use

- All the profiles and specially the decorative ones, must be handled as carefully as possible in order to avoid any damage. Before installing the profiles, please, check that there is no any damage.
- Choose the profile according to the tile thickness. We recommend to choose a profile at least 1 mm thicker than the tile.
- Before installation, protect from any element which could damage the profile; specially for the wooden profiles.
- Lay the ceramic riser with the thin-bed method, with adhesive and a notched trowel.
- Place the profile so that it conceals the cut in the riser. Press the profile flange on the adhesive and check that it is covered by the bonding material.
- Lay the tread and adjust the level to the height of the profile. Do not leave the profile above the tile level.
- As a general rule, we recommend to leave 1 mm joint between the profile and the tile. In stable substrates with no movement risk, a minimum joint can be used.
- Before sealing the tiling joints, check that the grouting material chosen does not scratch nor chemically alters the profile surface. If it does, cover the profile with protective tape.
- Fill completely the joint between tile and profile with grouting material. Never let the grouting material harden on the profile.

Never use metallic tools or abrasive elements which can scratch the profile surface.

Cut the profile with a hand saw or with a circular saw with a suitable disc. Be extremely cautious when cutting stainless steel profiles.

Cleaning and maintenance

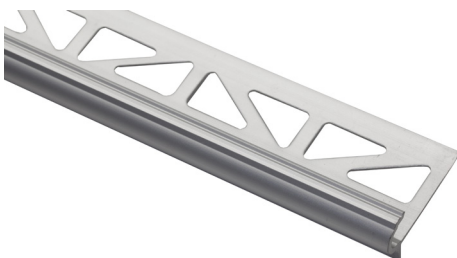
- These profiles do not need cleaning and maintenance different from the tiles in which they are installed, except the wooden profiles. Maintenance of the wooden profiles will depend on the treatment or varnish previously applied. Follow the supplier's instructions for the maintenance product.
- Use neutral cleaning products. Do not use products containing hydrochloric or hydrofluoric acid. In any case, we recommend you perform a previous test before use.
- Do not use abrasive or metallic elements which can scratch the profile surface.
- Natural wood profiles need the same maintenance as the rest of woods.

Data Sheet Conditions

- This is not a finished product technical sheet. It belongs to a product which, together with others, is the base of a ceramic tile laying system with which professionals perform their job. Instructions in this technical sheet have been written based on our experience and technical expertise, but they have to be considered as general recommendations, which together with those for the rest of the products in the system, help the professionals in their job.
- As it is not possible to know all the features and conditions of a building job, professionals must consider it and, if deemed appropriate, perform a previous test to confirm whether the product is suitable for the job. Specially recommended in applications which imply mechanical stresses or chemical reactions not described in this technical sheet.
- The technical sheet cannot reflect all the applications and conditions entailed in the use of a material, so, in situations not described in this sheet, we recommend to perform a previous test and refer to our technical department.
- This sheet has been updated in February, 2021.



pro-step M2



pro-step M1



pro-step PVC 35

pro-step



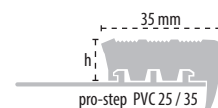
Stainless steel M2

SAP	h (mm)
100005523	11

Anodized aluminium silver M1

SAP	h (mm)
100005509	11
100067688	13,5

pro-step



PVC 35

SAP	h (mm)
100005482	11

Profile length: 2500 mm

Minimum packaging: 10 profiles