

Gold Collection

Decorative profiles for wall tiles, 24K gold plated and in brass with gold finish. They perfectly match ceramics and give distinction and elegance to the most exclusive bathroom settings. It is an alternative to the traditional ceramic frieze. Suitable for trimming corners and transitions between ceramic tiles.

This type of profiles features square angle finishes, which allows for a no joint perfect fit with rectified ceramic tiles. Its design with sleek, straight lines, makes this profile specially recommended for the most luxurious settings.

Recommended use:

- Decorative line in ceramic wall tiles.
- Separation of wall tiles with different designs or formats.
- Right angle trim for wall corners.
- Right angle trim for wall tiles: frames, corbels or low brick walls.
- Residential and public use.
- Permanently damp environments and direct contact with water.
- Do not use for floor tiles.
- Do not use in outdoor walls or pools.

Materials

- 24K gold plated brass.
- Brass with gold finish

Substrates

- All substrates suitable for ceramic tiles laying.
- A suitable substrate for laying ceramics with the thin-bed method must be clean, dry, compact, with a rough texture and flat (deviations inferior to 3 mm every 2 m of surface).

Features

pro-mate 5

- 5 mm side edge.
- 90° angle finish
- Side flange to ease installation.
- Having no ledges, it can be laid in direct contact with the profile. Especially recommended for rectified tiles.

pro-part

- 8 mm side edge.
- 90° angle finish
- Side flange to ease installation.
- Having no ledges, it can be laid in direct contact with the profile. Especially recommended for rectified tiles.

pro-part Li

- Both sides of the profile have exactly the same length.
- Side edges in 9, 10, 11 or 12.5 mm.
- 90° angle finish
- Side flange to ease installation.
- Having no ledges, it can be laid in direct contact with the profile. Especially recommended for rectified tiles.

Certifications/Standards:

Corrosion tests in artificial atmosphere or salt spray test (UNE-EN-ISO 9227) have been performed. After 100 hours of test, no defects, cracks or traces of rust are observed.

Profile types

Gold plated brass

Brass profiles, made by extrusion and 24K gold electroplating. Depending on the profile, a final polishing is performed to achieve a gloss finish.

High finish and gloss profile. Specially recommended for decorating indoor wall tiles.

- **Features:**
 - Matt/Gloss.
 - Wall tile
 - Indoors.
- Protect from any abrasive element which could scratch the exposed profile surface.

Brass finished in gold

Brass profile manufactured by extrusion with a brushed gold finish.

Especially recommended for interior cladding decoration.

- **Characteristics:**
 - Mate
 - Coating
 - Inside.
- Protect from any abrasive element that could scratch the visible surface of the profile.

Instructions for use

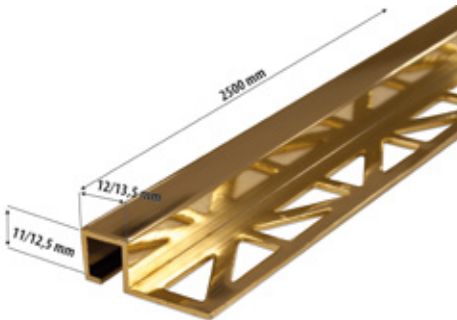
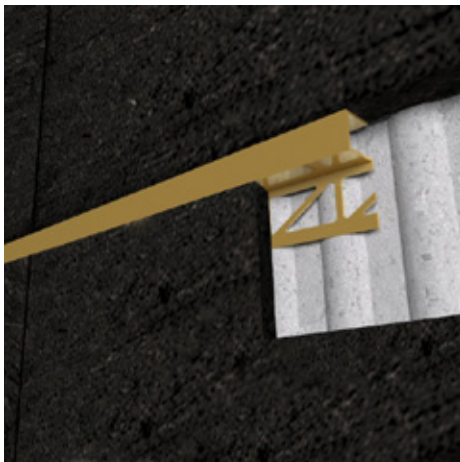
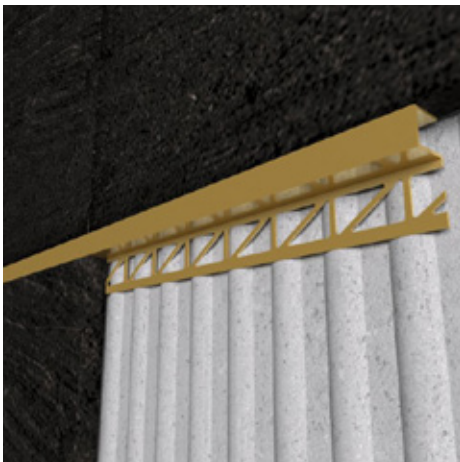
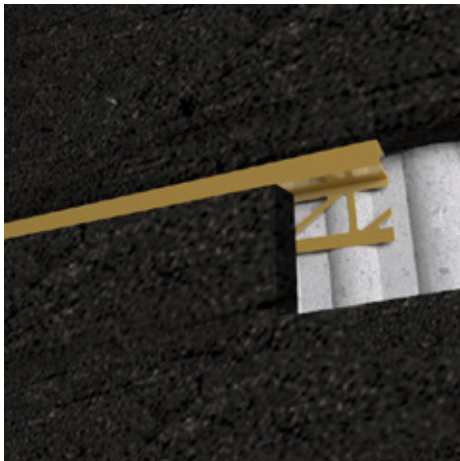
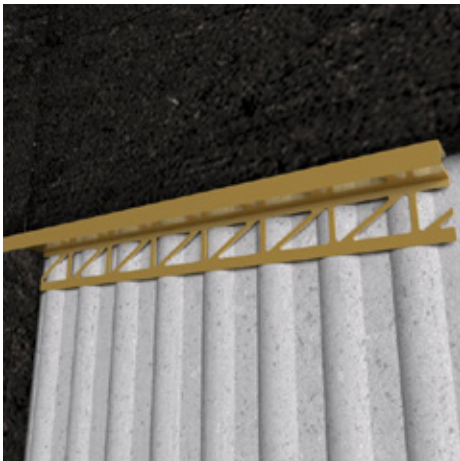
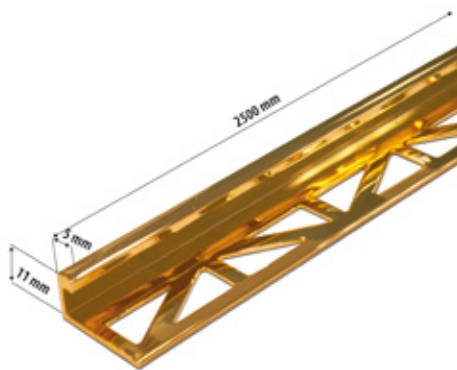
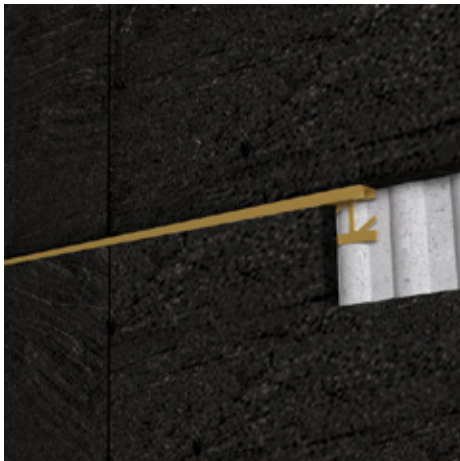
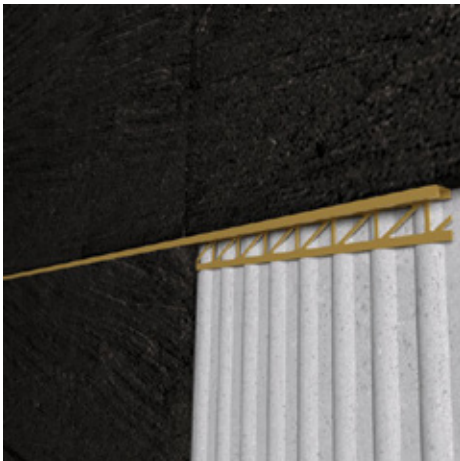
- All the profiles and specially the decorative ones, must be handled as carefully as possible in order to avoid any damage. Before installing the profiles, please, check that there is no any damage.
- Choose the profile according to the tile thickness. We recommend to choose a profile at least 1 mm thicker than the tile.
- Lay the tile with the thin-bed method, with adhesive and a notched trowel.
- Press the profile flange on the adhesive and check that it is covered by the bonding material.
- Level the profile with the tile. Do not leave the profile above the tile level.
- As a general rule, we recommend to leave 1 mm joint between the profile and the tile. In stable substrates with no movement risk, a minimum joint can be used.
- Before sealing the tiling joints, check that the grouting material chosen does not scratch nor chemically alters the profile surface. If it does, cover the profile with protective tape.
- Fill completely the joint between tile and profile with grouting material. Never let the grouting material harden on the profile. Be extremely cautious when applying and cleaning grout.
- Never use metallic tools or abrasive elements which can scratch the profile surface.
- Cut the profile with a hand saw or with a circular saw with a suitable disc. Be extremely cautious when cutting stainless steel profiles.

Cleaning and maintenance

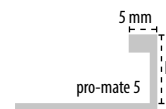
- These profiles do not need cleaning and maintenance different from the tiles in which they are installed.
- Use neutral cleaning products. Do not use products containing hydrochloric or hydrofluoric acid. In any case, we recommend you perform a previous test before use.
- Do not use abrasive or metallic elements which can scratch the profile surface.

Data Sheet Conditions

- This is not a finished product technical sheet. It belongs to a product which, together with others, is the base of a ceramic tile laying system with which professionals perform their job. Instructions in this technical sheet have been written based on our experience and technical expertise, but they have to be considered as general recommendations, which together with those for the rest of the products in the system, help the professionals in their job.
- As it is not possible to know all the features and conditions of a building job, professionals must consider it and, if deemed appropriate, perform a previous test to confirm whether the product is suitable for the job. Specially recommended in applications which imply mechanical stresses or chemical reactions not described in this technical sheet.
- The technical sheet cannot reflect all the applications and conditions entailed in the use of a material, so, in situations not described in this sheet, we recommend to perform a previous test and refer to our technical department.
- This sheet has been updated in January, 2023.



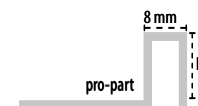
pro-mate 5



Gold 24K

SAP	h (mm)
100100722	12,5 mm
100100721	11 mm

pro-part



Gold 24K

SAP	h (mm)
100100725	12,5 mm
100100724	11 mm
100331779	9 mm
100246452	7 mm

Antique gold

SAP	h (mm)
100314848	11 mm

pro-part Li



Gold 24K

SAP	h (mm)	f (mm)
100100762	12,5 mm	13,5 mm
100100726	11 mm	12 mm

Profile length: 2500 mm

Minimum packaging: 10 profiles