

pro-shower floor

pro-shower floor

Extraordinary sloping profile for linear drain joints

pro-shower floor is a stainless steel sloping profile for exposed joints of linear drains with a 2% slope. **pro-shower floor** is available for right or left joints.

Recommended use

- Built-in shower trays with mosaics or ceramic tiles.
- Residential and public use.
- Permanently damp environments and direct contact with water.
- Do not use in pools.

Materials

- V2A-type stainless steel: 1.4301

Substrates

- All substrates suitable for built-in showers.
- A suitable substrate for laying ceramics with the thin-bed method must be clean, dry, compact, with a rough texture and flat (deviations inferior to 3 mm every 2 m of surface).
- Approximate substrate slope: 2%.

Features

- Sloped exposed side with a 2% slope.
- Side flange to ease installation.
- Compatible with the following waterproofing systems:
 - **imperband** Waterproofing sheet.
 - **imperband kit**.
 - **sylastic** waterproofing mortar.
 - **imperbox** Waterproofing dispersion.
- Easy to cut with every tile layer's everyday tools.
- It prevents slanted cuts of the tiles.

Profile types

Stainless steel pro-shower wall.

Stainless steel profiles are produced by folding, so their shape is slightly different to that of aluminum or brass profiles. Angles and shapes will always have a rounded finish.

Profiles made of stainless steel are highly resistant both to mechanical stress and chemical attack. Specially recommended outdoors.

- Features:
 - V2A (1.4301).
 - Chrome / Brushed.
 - Intersection between shower tray and floor.
 - Indoor / Outdoor.
- Not recommended for use in pools or any other use in direct contact with concentrated chemicals. In any case, we recommend you perform a previous test to check its suitability.

Installation

- All the profiles and specially the decorative ones, must be handled as carefully as possible in order to avoid any damage. Before installing the profiles, please, check that there is no any damage.
- Press **pro-shower floor** with the perforated fastening arm into the fresh layer of adhesive, and level.
- Press the next tile strongly and level it until the upper edges of the profile and the tile are flush.
- Leave a joint to the tile that is at least 1.0 mm wide.
- Before sealing the tiling joints, check that the grouting material chosen does not scratch nor chemically alters the profile surface. If it does, cover the profile with protective tape.
- Fill completely the joint between tile and profile with grouting material. Never let the grouting material harden on the profile.

Never use metallic tools or abrasive elements which can scratch the profile surface.

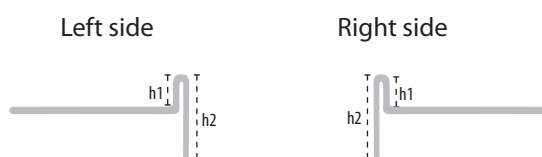
Cut the profile with a hand saw or with a circular saw with a suitable disc. Be extremely cautious when cutting stainless steel profiles.

Cleaning and maintenance

- These profiles do not need cleaning and maintenance different from the tiles in which they are installed.
- Use neutral cleaning products; in any case, we recommend you perform a previous test before use. Cleaning products must not contain hydrochloric acid or chlorine.
- Do not use abrasive or metallic elements which can scratch the profile surface. Never use steel wool or steel brushes for cleaning, as the abrasion may create rust.

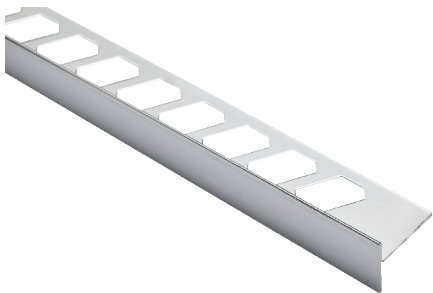
Technical data

Profile length:	L: 0.98 m
Height:	h1: 12.5 mm
	h2: 24.0 mm
Profile length:	L: 1.48 m
Height:	h1: 12.5 mm
	h2: 32.0 mm
Profile thickness:	0.8 mm
Fixing flange:	38.0 mm
Material:	brushed V2A stainless steel
	chrome-plated V2A stainless steel
Profile position:	left or right
Profile/shower slope:	approx. 2 %
Material	V2A-type stainless steel: 1.4301

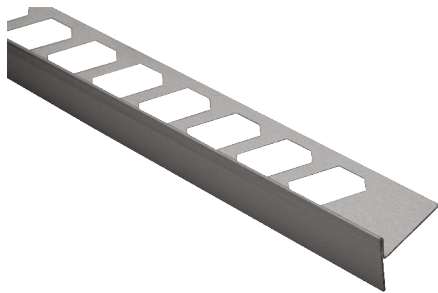


Technical Sheet Conditions

- This is not a finished product technical sheet. It belongs to a product which, together with others, is the base of a ceramic tile laying system with which professionals perform their job. Instructions in this technical sheet have been written based on our experience and technical expertise, but they have to be considered as general recommendations, which together with those for the rest of the products in the system, help the professionals in their job.
- As it is not possible to know all the features and conditions of a building job, professionals must consider it and, if deemed appropriate, perform a previous test to confirm whether the product is suitable for the job. Specially recommended in applications which imply mechanical stresses or chemical reactions not described in this technical sheet.
- The technical sheet cannot reflect all the applications and conditions entailed in the use of a material, so, in situations not described in this sheet, we recommend to perform a previous test and refer to our technical department.
- This sheet has been updated in February, 2021.



pro-shower floor



pro-shower floor



pro-shower floor

pro-shower floor

Chrome-plated stainless steel

SAP		h(mm)	L(m)
100159068	Left side	12.5	0.98
100160219	Right side	12.5	0.98
100159069	Left side	12.5	1.48
100160280	Right side	12.5	1.48

Profile length h2=24 980 mm
Profile length h2=32 1480 mm

Brushed stainless steel

SAP		h(mm)	L(m)
100159067	Left side	12.5	1.48
100160218	Right side	12.5	1.48

Profile length h2=32 1480 mm

