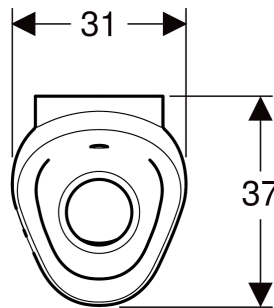
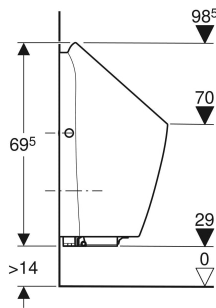
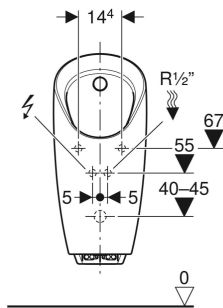


# Geberit Preda urinal with integrated control, mains operation



## APPLICATION PURPOSES

- For operating with automatic, water-saving flush
- For Geberit installation elements for urinals with or for integrated flush control

## CHARACTERISTICS

- IR user detection with leg detection
- Rimless
- Wall-hung
- Urinal flush control can be replaced from front, without removing ceramic appliance
- Spray head can be replaced from front, without removing ceramic appliance
- Trap can be replaced from top, without removing ceramic appliance
- Trap adapter can be height-adjusted without tools
- Drainage system can be cleaned without removing ceramic appliance
- Water-saving hybrid mode can be set
- Adjustable interval flush
- Preflush can be set
- Power failure control unit
- Valve-closing function when power fails
- Functions can be set and queried with the Geberit Service Handy

- Device settings and operation with mobile device via integrated Bluetooth® interface
- Compatible with Geberit Control App
- Wired networkable with Geberit gateway via GEBUS converter
- Wirelessly connectable with Geberit Gateway via Bluetooth®
- Compatible with Geberit Connect
- Flush volume can be reduced to 0.5 l per flush with flush time
- Flushing out of urinal ceramic with 0.5 l per flush guaranteed, while compliant with EN13407
- Tap group II in accordance with DIN 4109

## TECHNICAL DATA

Protection degree	IP45
Nominal voltage	110–240 V AC
Operating voltage	4.5 V DC
Mains frequency	50–60 Hz
Power consumption standby max.	0.1 W
Flow pressure	1–8 bar
Test pressure, water max.	16 bar
Flush volume small, adjustment range	0.5 l
Flow rate at 1 bar with flow limiter	0.18 l/s

Interval flush time, factory setting	5 s
Detection time, factory setting	7 s
Flush time, adjustment range	1–15 s
Flush time, factory setting	7 s
Product material	Vitreous china

## SCOPE OF DELIVERY

- Urinal flush control with power supply unit and solenoid valve
- Fastening material
- Urinal trap with suction function
- Drain strainer
- Drain assembly
- Inlet set
- Water pressure reducing valve

## ACCESSORIES

- Geberit drain strainer for Preda, Selva and Tamina urinals

## INFO

- For installing and removing the urinal flush control without removing the ceramic appliance, the urinal rim height must be at least 55 cm above finished floor

Art. no.	Colour / surface	B cm	H cm	T cm	Power consumption W	Inlet	Outlet	Aim
116.072.00.1	white	31	69.5	37	≤ 0.5	rear	to the rear	no