

pro-dilata

Profile for movement joints in ceramic floor coverings.

PVC or metal profiles with a central elastic joint for the absorption of tensions in the ceramic floor. Available in several colors and joint widths, they are the best solution for creating intermediate movement joints.

Recommended use:

- Intermediate movement joints in floorings.
- The layout, width, and construction details of the perimetral and intermediate movement joints, as well as the materials to be used, should be included in the ceramic tile laying design and are the responsibility of the site management of such design.
- As a general rule, make intermediate movement joints which delimit areas as square as possible of 16-25 m² outdoors and 50-70 m² indoors. They must have a minimum width of 5 mm. We recommend to perform a cut on the substrate to weaken it and to direct potential cracks, just beneath the pro-dilata profile.
- Residential and public use.
- Pedestrian traffic: **pro-dilata PVC**
- Wheeled traffic: **pro-dilata metal**

Materials

- PVC
- Aluminium.
- V2A-type stainless steel.

Substrates

- All substrates suitable for ceramic tiles laying.
- A suitable substrate for laying ceramics with the thin-bed method must be clean, dry, compact, with a rough texture and flat (deviations inferior to 3 mm every 2 m of surface).

General features

- Available in 8 and 10 mm widths.
- Double side flange to ease installation.
- Having no ledges, it can be laid in direct contact with the profile. Especially recommended for rectified tiles.
- Easy to cut with every tile layer's everyday tools.

pro-dilata CFI Features

- Available for 5 mm wide movement joints.
- Continuous look throughout the entire movement joint.
- Available in four colors: ivory, light gray, gray, and black.
- Having no ledges, it can be laid in direct contact with the profile. Especially recommended for rectified tiles. Double side flange to ease installation.
- One of the side flanges includes a break line to make profile cutting easier for its use as a perimeter joint.
- Easy to cut with every tile layer's everyday tools.
- Resistant to fungi and bacteria.
- Resistant to UV rays.

Profile types

pro-dilata PVC

Profile made in colored, hard PVC.

5 or 8 mm wide and 8-15 mm high profile.

- **Available finishes.**
 - Color: White, beige, gray, light gray, ivory and black.
 - Appearance: Matt.
- **Applications:**
 - Floor tile
 - Indoor / Outdoor.
 - Permanently damp environments and direct contact with water.
 - Not recommended for floorings needing high mechanical resistance or with wheeled traffic.
- **General recommendations:**
 - Protect from cement mortars with ultrafine pigments. They can irreversibly stain the profile.

pro-dilata aluminium

Aluminium profile manufactured by extrusion.

10 mm wide and 12.5-30 mm high profile.

- **Characteristics:**
 - Natural aluminium
 - Matt
 - Floor tile
 - Indoor / Outdoor.
-
- Protect from any abrasive element which could scratch the exposed profile surface.
- Aluminium profiles are sensible to the combination of dampness and alkaline products like cement mortars. It is recommended to be extremely careful when installing them. Avoid contact with cement mortars as far as possible and clean any mortar stain which affects the exposed edge of the profile as soon as possible.

pro-dilata stainless steel

Stainless steel profiles are produced by folding, so their shape is slightly different to that of aluminium or brass profiles. Angles and shapes will always have a rounded finish.

Profiles made of V2A stainless steel are highly resistant both to mechanical stress and chemical attack. Specially recommended outdoors.

8 mm wide and 8-30 mm high profile.

- **Characteristics:**

- Matt
 - Floor tile
 - Indoor / Outdoor.
- The profile is supplied with a plastic film protecting it during installation. Once the profile installed, peel off the film with a cutter.
 - Not recommended for use in pools or any other use in direct contact with concentrated chemicals. In any case, we recommend you perform a previous test to check its suitability.

Instructions for use

- All the profiles and specially the decorative ones, must be handled as carefully as possible in order to avoid any damage. Before installing the profiles, please, check that there is no any damage.
- Choose the profile according to the tile thickness. We recommend to choose a profile at least 1 mm thicker than the tile.
- In cement-based substrates, cut the substrate in all the length where the profile is to be installed. The cut shall have at least 1/3 of the compression layer thickness.
- Lay the tile with the thin-bed method, with adhesive and a notched trowel.
- Press the profile flange on the adhesive and check that it is covered by the bonding material and there are no gaps through which water can seep.
- Level the profile with the tile. Do not leave the profile above the tile level.
- As a general rule, we recommend to leave 2-3 mm joint between the profile and the tile. In stable substrates with no movement risk, a minimum joint can be used.
- Before sealing the tiling joints, check that the grouting material chosen does not scratch nor chemically alters the profile surface. If it does, cover the profile with protective tape.
- Fill completely the joint between tile and profile with grouting material. Never let the grouting material harden on the profile.

Never use metallic tools or abrasive elements which can scratch the profile surface.

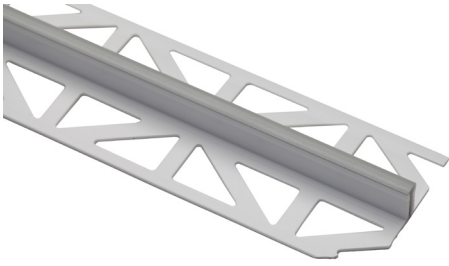
Cut the profile with a hand saw or with a circular saw with a suitable disc. Be extremely cautious when cutting stainless steel profiles.

Cleaning and maintenance

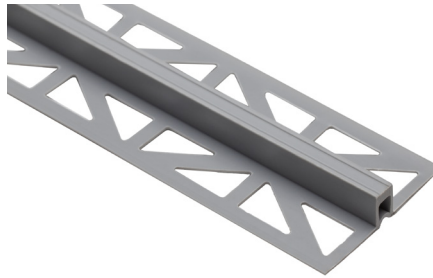
- These profiles do not need cleaning and maintenance different from the tiles in which they are installed.
- Use neutral cleaning products. Do not use products containing hydrochloric or hydrofluoric acid. In any case, we recommend you perform a previous test before use.
- Do not use abrasive or metallic elements which can scratch the profile surface.

Data Sheet Conditions

- This is not a finished product technical sheet. It belongs to a product which, together with others, is the base of a ceramic tile laying system with which professionals perform their job. Instructions in this technical sheet have been written based on our experience and technical expertise, but they have to be considered as general recommendations, which together with those for the rest of the products in the system, help the professionals in their job.
- As it is not possible to know all the features and conditions of a building job, professionals must consider it and, if deemed appropriate, perform a previous test to confirm whether the product is suitable for the job. Specially recommended in applications which imply mechanical stresses or chemical reactions not described in this technical sheet.
- The technical sheet cannot reflect all the applications and conditions entailed in the use of a material, so, in situations not described in this sheet, we recommend to perform a previous test and refer to our technical department.
- This sheet has been updated in February, 2022.



pro-dilata PVC CFI



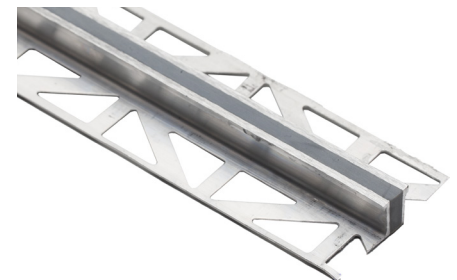
pro-dilata PVC CFL



pro-dilata CFM stainless steel



pro-dilata CFM stainless steel nc



pro-dilata CFM aluminum

pro-dilata PVC



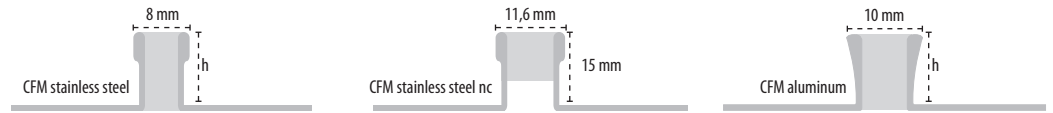
CFI 5 mm

SAP		h (mm)
100316178	Light grey	9
100159078	Light grey	11
100159080	Light grey	12,5
100316191	Grey	9
100159076	Grey	11
100159077	Grey	12,5
100316182	Black	9
100159081	Black	11
100159082	Black	12,5
100316183	Beige	9
100159074	Beige	11
100159075	Beige	12,5

CFL 8 mm

SAP		h (mm)
100005685	White	12,5
100005682	Beige	10
100005686	Beige	12,5
100005690	Beige	15
100005683	Black	10
100005687	Black	12,5
100005691	Black	15
100005684	Grey	10
100005688	Grey	12,5
100005692	Grey	15

pro-dilata metal



Stainless steel CFM 8 mm

SAP	h (mm)
100005714	10
100005715	12,5
100005716	15
100005717	20

Stainless steel nc CFM 6 mm

SAP	h (mm)
100280152	15

Aluminum CFM 10 mm

SAP	h (mm)
100005698	10
100005699	12,5
100005700	15
100005702	20

Profile length: 2500 mm

Minimum packaging: 10 profiles